

The image shows a musical staff in treble clef with a key signature of one flat (Bb). The melody consists of diamond-shaped notes. The first line contains the notes for 'In loco pas - cu - æ.' followed by a double bar line. The second line contains the notes for 'Do - mi - nus re - git me, et mi - hil'. Brackets are placed above the notes for 'Do' and 'mi' in the second line, indicating a specific interval or relationship between these notes.

In loco pas - cu - æ. Do - mi - nus re - git me, et mi - hil

mi - hi de - e - rit: in lo - co pas - cu - æ i - bi me col - lo - ca - vit. —

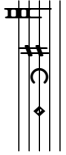
The image shows a single staff of music in treble clef. The melody consists of a sequence of diamond-shaped notes. The first note is on the second line (G4), followed by a half note on the second space (A4), and then a series of quarter notes on the second space (A4), second line (G4), and first space (F4). A colon after 'rit:' indicates a change in tempo. The notes continue on the first space (F4), first line (E4), and first space (F4) for the word 'in'. The next section, 'lo - co', features a series of quarter notes on the first space (F4), first line (E4), and first space (F4). The word 'pas - cu - æ' is set to a series of quarter notes on the first space (F4), first line (E4), and first space (F4). The word 'i - bi' is set to a series of quarter notes on the first space (F4), first line (E4), and first space (F4). The word 'me' is set to a quarter note on the first space (F4). The final phrase 'col - lo - ca - vit. —' is set to a series of quarter notes on the first space (F4), first line (E4), and first space (F4). A bracket under the final notes indicates a fermata.

Cantus



In lo - co - - - - - pa - - - - - scu - æ - - - - - i -

Altus



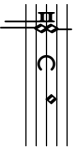
In lo - co pa - - - - - scu - - - - - æ i - bi -

Tenor



In lo - co pa - - - - - scu - - - - - æ i -

Bassus



In lo - co pa - - - - - scu - æ - - - - - i -

5

bi me col - lo - ca - - - vit. #

me col - lo - ca - - - vit.

bi me col - lo - ca - - - vit.

bi me col - lo - ca - - - vit.