

Cantus I



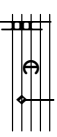
A - gnus De - i, a -

Cantus II



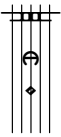
A - gnus De - i, a - gnus De -

Altus



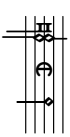
Agnus De-

Tenor



A - gnus De - i, a - gnus De -

Bassus



A - gnus De - i, a - gnus De -

7

gnus De - - - - - i

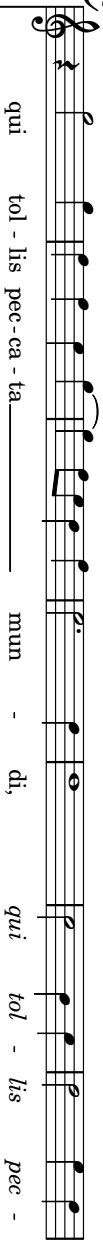
- - - - - i a - - - - - gnus De - - - - - i qui tol-lis pec-ca-

- - - - - i a - - - - - gnus De - - - - - i qui

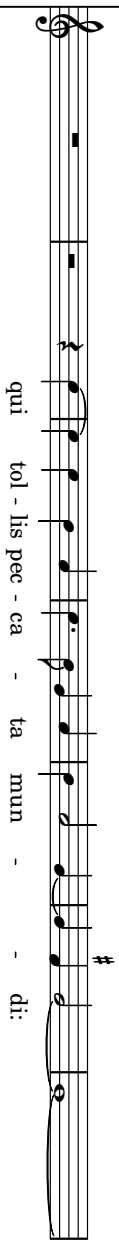
A-gnus De - - - - - i, a - - - - - gnus De - - - - - i, qui tol - lis pec - ca -

8

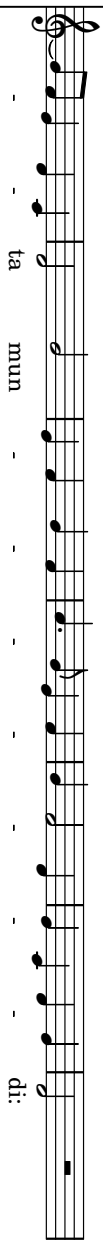
14



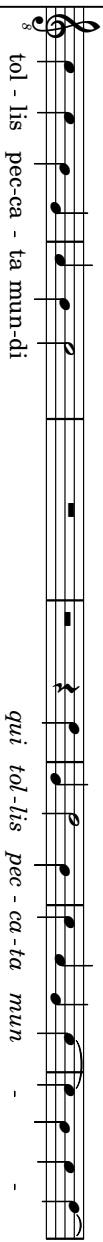
qui tol - lis pec - ca - ta - - - - - mun - - - - - di, qui tol - lis pec -



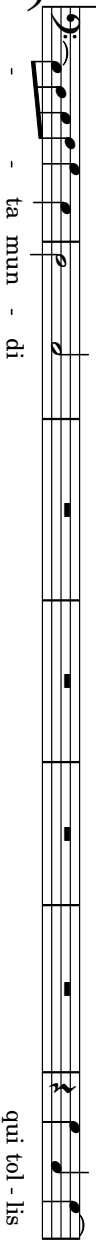
qui tol - lis pec - ca - - - - - ta mun - - - - - di:



- - - - - ta mun - - - - - di:



tol - lis pec - ca - - - - - ta mun - di qui tol - lis pec - ca - ta mun - - - - -



- - - - - ta mun - - - - - di qui tol - lis

21

The image shows a musical score for a vocal part, likely a soprano or alto, in a single system. The score is written on a grand staff with a treble clef. The lyrics are in Latin and are written below the notes. The music features a mix of quarter, eighth, and sixteenth notes, with some rests and slurs. The lyrics are: "ca - ta mun - - di: mi - se - re - re - - no - - mi - se - re - re no - bis, mi - se - re - re no - - mi - se - re - re - - no - - bis, mi - se - re - re no - - pec - ca - ta mun - - di: mi - se - re - re - - no - - bis mi - se - re - re no - -". There are some small annotations like "8" and "8" near the beginning of the lines.

ca - ta mun - - di: mi - se - re - re - - no - - mi - se - re - re no - bis, mi - se - re - re no - -  
 pec - ca - ta mun - - di: mi - se - re - re - - no - - bis mi - se - re - re no - -

27

- - - bis mi - se - re - re no - - -

- mi - se - re - re no - bis mi - se - re - re no - bis mi - se - re -

no - - - bis mi - se - re - re - - - bis

mi - se - re - re - - - no - - - - - - - - -

bis mi - se - re - re no - bis mi - se - re -

*bis* mi-se-re - re no - - - - - bis.

*re no - bis* mi - se - re - re no - bis.

mi-se-re - re no-bis mi - se - re - re no - bis.

*bis,* mi-se-re - re no - - - - - bis.

*re no - - - - - bis,* mi - se - re - - - - - re no - - - - - bis.

40

Cantus I  
A - gnus De - i  
*a-gnus De* - - - i  
qui -

Cantus II  
A - gnus De - - - - -

Altus I  
A - gnus De - - - - - i

Altus II  
A - gnus De - - - - - i  
qui tol - lis pec - ca - ta mun -

Tenor  
A - gnus De - - - - -  
A-gnus De - - -

Bassus  
A - - - - - gnus De - -

46

tol - lis pec-ca-ta mun - di

i, qui tol - lis pec-ca-ta mun - di

qui tol - lis pec-ca-ta mun - di

di pec-ca-ta mun-di qui tol-lis

qui tol - lis pec-ca-ta-mun-di, qui tol-lis pec-ca-ta-mun-di



pec-ca - ta mun - di: \_\_\_\_\_

do - na no - bis \_\_\_\_\_

pec - ca - ta mun - di: \_\_\_\_\_

pec - ca - ta mun - di: do - na no - bis pa -

pec-ca - ta mun - di: do - na no - bis pa -

ta mun - di qui tol - lis pec - ca - ta mun - di:

ta mun - di qui tol - lis pec - ca - ta mun - di: do - na no - bis

59

pa - - - - - cem do - na no - bis -

do - na no - bis pa - - - - - cem do - na no - bis -

do - na no - bis pa - - - - - cem do - na no - bis -

do - na no - bis pa - - - - - cem do - na no - bis -

pa - cem do - na no - bis pa - - - - -

pa - - - - - cem *do-na no - bis pa -*  
*na no - - - bis pa - - - cem do - na no - bis pa - -*  
*na no - bis pa - cem do - na no - bis pa - - - - - cem*  
*cem do - na no - bis pa - - - - - cem*  
*cem do - na no - bis pa - - - - - cem*  
*cem do - na no - bis pa - - - - - cem*  
*cem do - na no - bis pa - - - - - cem*

Musical score for voice and bassoon. The score consists of five systems of staves. The top staff is the vocal line (soprano), and the bottom staff is the bassoon line. The lyrics are written below the vocal staff. The music is in a key with one sharp (F#) and a common time signature. The vocal line features various note values including quarter, eighth, and sixteenth notes, as well as rests and slurs. The bassoon line provides harmonic support with similar rhythmic patterns and rests.

71

*cem, do - na no - bis pa - cem*  
*do - na no - bis pa - cem do - na no - bis pa -*  
*cem do - na no - bis pa -*  
*do - na no - bis pa -*  
*bis - pa -* *do - na*

