

Cantus
qui tol - - lis pec - ca - ta mun -

Altus
qui tol - - lis pec - ca - ta mun - - -

Tenor
qui tol - lis pec - ca - ta mun -

Bassus
qui tol - lis pec - ca - - ta mun -

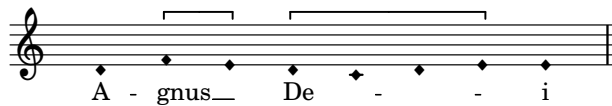
11

- di do - na e - is re - qui - em.

- di, do - na e - is, do - na, do - na e - is re - qui - em.

- di, do - na e - is do - na e - is, do - na e - is re - qui - em.

- di do - na e - is re - qui - em re - qui - em.



25

qui tol - - lis pec - - ca - ta_____ mun - - di

qui tol - - lis pec - - ca - ta_____ mun - di do-

qui tol - - lis pec - ca - - ta mun - - di, mun - -

qui tol-lis pec - ca - ta_____ mun - di mun - - di, do-

Detailed description: The image shows a musical score for the 'Agnus Dei' from the 'Officium defunctorum' (Funeral Office). It consists of four staves. The top staff is a vocal line in G major (one sharp) and 4/4 time, starting at measure 25. The lyrics are 'qui tol - - lis pec - - ca - ta_____ mun - - di'. The second staff is an instrumental line, likely for a lute or harp, with a '8' indicating the octave. The lyrics are 'qui tol - - lis pec - - ca - ta_____ mun - di do-'. The third staff is another instrumental line, also with an '8' indicating the octave. The lyrics are 'qui tol - - lis pec - ca - - ta mun - - di, mun - -'. The fourth staff is a bass line. The lyrics are 'qui tol-lis pec - ca - ta_____ mun - di mun - - di, do-'. The score includes various musical notations such as notes, rests, beams, and slurs.

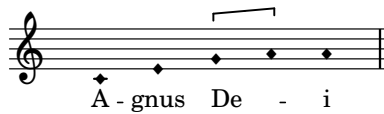
37

do - na e - is re - qui - em, re - qui - em.

- na e - is, do - na e - is, do - na e - is re - qui - em.

- di, do - na e - is do - na e - is, do - na e - is re - qui - em.

- na e - is re - qui - em, re - qui - em, re - qui - em.



50

qui tol - lis pec-ca - ta mun - di, do - na e - is, do -

qui tol - lis pec-ca - ta mun - di, do - na e - is, do -

qui tol - lis pec-ca - ta mun - di do - na e - is, do -

qui tol - lis pec-ca - ta mun - di do - na e - is re -

61

na e - is re - qui - em sem - pi - ter - nam.

- na e - is re - qui - em sem - pi - ter - nam.

- na e - is re - qui - em sem - pi - ter - nam.

- qui - em sem - pi - ter - nam, sem - pi - ter - nam.