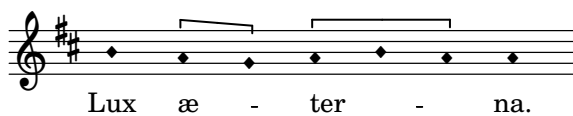


10 (alt 1). Communio

de la Missa pro defunctis

Missarum liber secundus 1582

Francisco Guerrero (1528-1599)



Cantus I
Cantus II
Altus
Tenor
Bassus

Lu - ce - at e -
Lu - ce - at e - is Do-mi-ne:
Lu - ce - at e - is Do - mi - ne, Do -
Lu - ce - at e - is Do - - mi - ne: Cum
Lu-ce-at e - is Do - - mi - ne, lu - ce-at e - is

6

is Do - mi - ne: Cum San - ctis tu - is in æ - ter -
Cum San - ctis tu - - is in æ - ter - num,
- mi - - ne: Cum San - ctis tu - is in æ - ter - num,
San-ctis tu - is in æ - - ter-num cum San-ctis tu - is in æ - ter - num,
Do - - mi - ne: Cum San - ctis tu - is in æ - ter -

12

- num, qui a pi - us es.
 - in æ - ter - num qui - a pi - us es qui - a pi - us es.
 in æ - ter - num, qui - a pi - us es, qui - a pi - us es.
 qui - a pi - us es.
 - num, qui - a pi - us es, qui - a pi - us es.

Re - qui - em æ - ter - nam do - na e - is Do - mi - ne.

19

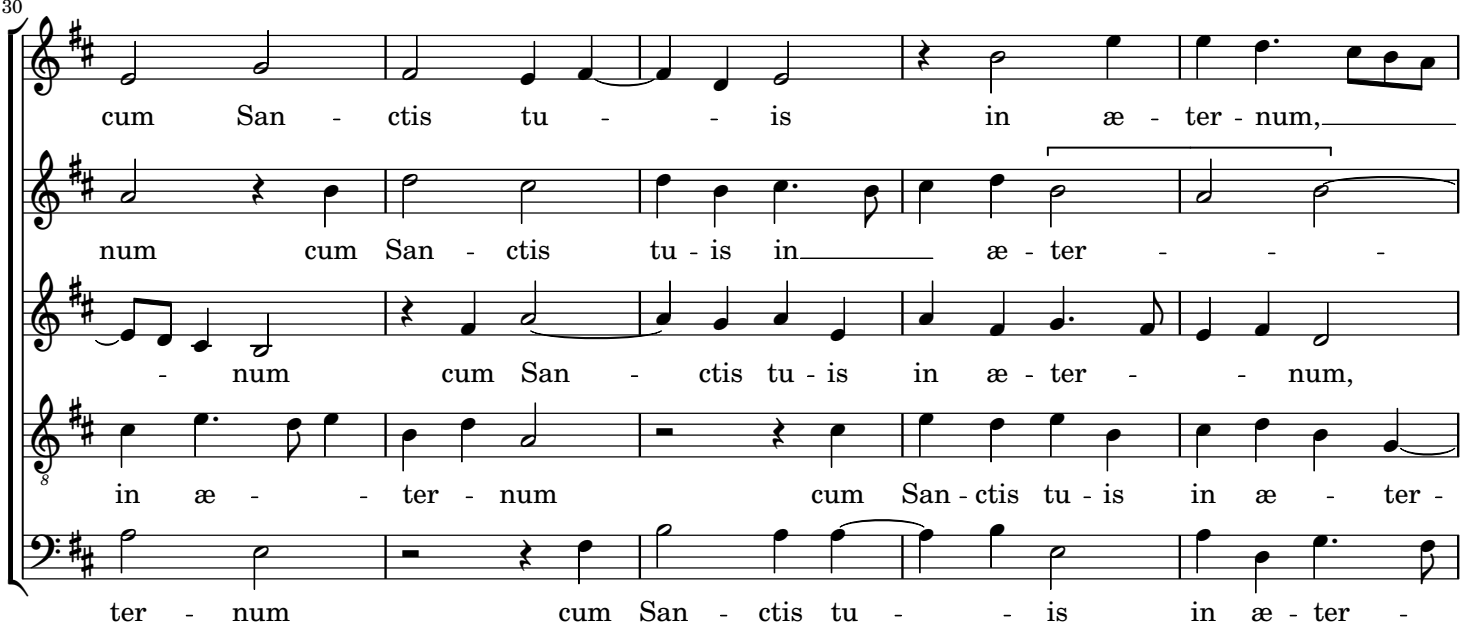
Et lux per-pe - tu - a lu - ce - at e - is.
 Et lux per-pe - tu - a lu - ce - at e - is. Cum San-ctis tu -
 Et lux per-pe - tu - a lu - ce - at e - is. cum San-ctis tu -
 Et lux per-pe - tu - a lu - ce - at e - is. Cum San-ctis tu -
 Et lux per-pe - tu - a lu - ce - at e - is.

25



Cum San - ctis tu - - is
 is in æ - ter - num cum San - ctis tu - is in æ - ter -
 is cum San - ctis tu - - is in æ - ter -
 - is in æ - ter - - num cum San - ctis tu - is
 Cum San - ctis tu - is in æ - ter - - num in æ - -

30



cum San - ctis tu - - is in æ - ter - num,
 num cum San - ctis tu - is in æ - ter - -
 - num cum San - ctis tu - is in æ - ter - - num,
 in æ - - ter - num cum San - ctis tu - is in æ - ter -
 ter - num cum San - ctis tu - - is in æ - ter -

35



- in æ - ter - num qui - a pi - us es qui - a pi - us es.
 - num, qui - a pi - - us es.
 in æ - ter - num, qui - a pi - us es, qui - a pi - us es.
 - num, qui - a pi - us es.
 - num, qui - a pi - us es, qui - a pi - us es.