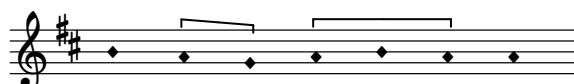


10. Communio

de la Missa pro defunctis

Missarum liber secundus 1582

Francisco Guerrero (1528-1599)



Lux æ - ter - na.

Cantus

Altus

Tenor

Bassus

Lu - ce - at e - is

Lu - ce - at e - is Do - mi-ne, lu -

Lu - ce - at e - is Do-mi - ne lu -

Lu - ce - at e - is Do-mi-ne, lu - ce - at e -

6

Do - mi - ne: Cum San - ctis tu -

ce - at e - is Do - mi-ne: Cum San - ctis tu - is in æ-ter -

ce - at e - is Do-mi - ne: Cum San-ctis tu - is in æ - ter -

- is Do - mi-ne: Cum San-ctis tu - is cum

12

is in æ-ter - num, qui - a pi - us es.

num cum San-ctis tu - is in æ-ter - num, qui-a pi - us es.

- num, cum San-ctis tu - is in æ-ter - num qui - a pi - us es.

San-ctis tu - is in æ - ter - num, qui - a pi - us es.

Re - qui - em æ - ter - nam do - na e - is Do - mi - ne.

19

Et lux per - pe - tu - a lu - ce - at e - - - is.

Et lux per - pe - tu - a lu - ce - at e - - -

Et lux per - pe - tu - a lu - ce - at e - is.

Et lux per - pe - tu - a lu - ce - at e - is. cum

24

Cum San - ctis tu - is in æ - ter -

is. Cum San - ctis tu - is cum San - ctis

Cum San - ctis tu - is cum San - ctis tu - is in

San - ctis tu - is cum San - ctis tu - is cum San - ctis

29

num, qui - a pi - - - us es.

tu - is in æ - ter - num, qui - a pi - us es.

æ - ter - - num, qui - a pi - - us es.

tu - - is in æ - ter - num, qui - a pi - us es.