

Cantus

Altus

Tenor

Bassus

Li - be - ra - ra - me

Li - be - ra me Do - mi - ne li - be - ra me Do -

Li - be - ra me Do - mi - ne, li - be - ra me Do - mi -

Li - be - ra me Do - mi - ne, Do - mi - ne

9

Do - mi - ne de - mi - ne li - ne - ra me Do - mi - ne de mor - te æ -

ne, li - be - ra me Do - mi - ne de mor - te æ -

li - be - ra me Do - mi - ne de mor - te æ -

17

mor - te æ - - - ter - na in di - e - - - ter - - na de mor - te æ - ter - na in di - e il - la in na æ - ter - na de mor - te æ - ter - na in di - e il - ter - - na, de mor - te æ - ter - na in

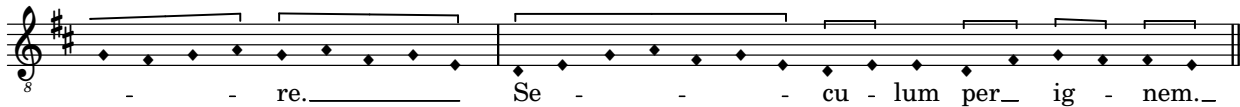
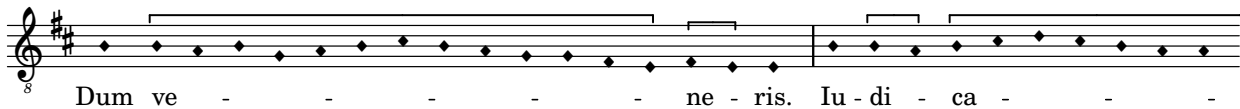
25

il - la tre - men - da.

di - e il - la tre - men - da, tre - men - da.

- - - la tre - men - da tre - men - da.

di - e il - la tre - men - da, tre - men - da.



33

Cantus

Tre - mens fa - ctus sum e - go et ti - -

Altus

8 Tre - mens factus sum e - - go et ti - me - o, et ti -

Tenor

8 Tre - mens fa - ctus sum e - - go et ti - me -

40

- me - o dum dis - cus - si - o ve - - ne -

- me - o dum dis-cus-si - o, dum dis-cus - si - o ve - - ne -

- o dum dis - cus - si - o, dum dis-cus - si - o ve - - ne -

48

rit, at - que ven - tu - ra i - ra.

rit at - que ven - tu - ra i - ra at - que ven - tu - ra i - ra.

rit at - que ven - tu - ra i - ra, at - que ven - tu - ra i - ra.

56

Cantus

Di - es il - la, di - es i - ræ

Altus

Di - es il - la, di - es i - - - - ræ

Bassus

Di - es il - la, di - es i - ræ ca - la -

63

ca - la-mi-ta - tis et mi - se - ri-æ

ca-la - mi-ta-tis et mi - se - ri - æ ca - la-mi-ta - tis et mi - se-ri-æ, di-

mi-ta-tis, ca - la-mi-ta - tis et mi-se - ri - æ ca - la-mi-ta - tis et mi-se-ri-æ,

71

di - es ma - gna et a - ma - ra val - de.

- - es magna et a - ma - ra val - - - de.

di - es ma - gna et a - ma - ra val - de, et a - ma - ra val - de.

The image shows a musical score for three voices. The top staff is in treble clef with a key signature of two sharps (F# and C#). The middle staff is also in treble clef with the same key signature. The bottom staff is in bass clef with the same key signature. The lyrics are written below each staff. The top staff has a measure rest at the beginning. The middle staff has a measure rest at the beginning. The bottom staff has a measure rest at the beginning. The lyrics are: 'di - es ma - gna et a - ma - ra val - de.' for the top staff, '- - es magna et a - ma - ra val - - - de.' for the middle staff, and 'di - es ma - gna et a - ma - ra val - de, et a - ma - ra val - de.' for the bottom staff. There are various musical notations including notes, rests, and slurs.

8 Dum ve - - - - - ne - ris. Iu - di - ca - - - - -

The first line of musical notation is on a treble clef staff with a key signature of two sharps (F# and C#). It begins with a fermata over the first measure. The melody consists of quarter notes: D4, E4, F#4, G4, A4, B4, C5, B4, A4, G4, F#4, E4, D4. A bar line occurs after the eighth measure. The melody continues with quarter notes: D4, E4, F#4, G4, A4, B4, C5, B4, A4, G4, F#4, E4, D4. There are fermatas over the final two measures.

8 - - - - - re. Se - - - - - cu - lum per_ ig - nem._

The second line of musical notation is on a treble clef staff with a key signature of two sharps (F# and C#). It begins with a fermata over the first measure. The melody consists of quarter notes: D4, E4, F#4, G4, A4, B4, C5, B4, A4, G4, F#4, E4, D4. A bar line occurs after the eighth measure. The melody continues with quarter notes: D4, E4, F#4, G4, A4, B4, C5, B4, A4, G4, F#4, E4, D4. There are fermatas over the final two measures.

81

C

Re - qui - em æ - ter - nam do - na e - is Do - - - - mi -

A

Re - qui - em æ - ter - nam do - na e - is Do - mi - ne, Do - - -

T

Re - qui - em æ - ter - nam do - na e - is Do - mi - ne:

B

Re - qui - em æ - ter - nam do - na e - is Do - mi - ne: et lux per -

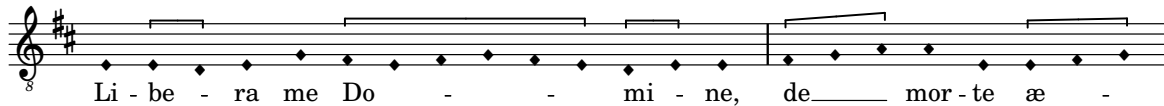
89

ne: et lux per-pe-tu-a lu - ce - at e - is lu - ce-at e - is.

- mi-ne: et lux per-pe-tu-a lu - ce-at e - is, lu - ce - at e - - is.

et lux per-pe-tu-a lu - ce - at e - - is.

pe - tu-a et lux per-pe-tu-a lu - ce - at lu - ce - at e - is.



8 Dum ve - - - - - ne - ris. Iu - di - ca - - - - -


The first line of musical notation is on a treble clef staff with a key signature of two sharps (F# and C#). It begins with a measure rest marked with the number 8. The melody consists of quarter notes: D4, E4, F#4, G4, A4, B4, C5, B4, A4, G4, F#4, E4, D4. A bar line occurs after the eighth measure. The melody continues with quarter notes: D4, E4, F#4, G4, A4, B4, C5, B4, A4, G4, F#4, E4, D4. The lyrics are "Dum ve - - - - - ne - ris. Iu - di - ca - - - - -".

8 - - re. Se - - - - - cu - lum per_ ig - nem._

The second line of musical notation is on a treble clef staff with a key signature of two sharps (F# and C#). It begins with a measure rest marked with the number 8. The melody consists of quarter notes: D4, E4, F#4, G4, A4, B4, C5, B4, A4, G4, F#4, E4. A bar line occurs after the eighth measure. The melody continues with quarter notes: D4, E4, F#4, G4, A4, B4, C5, B4, A4, G4, F#4, E4. The lyrics are "- - re. Se - - - - - cu - lum per_ ig - nem._".


97

Cantus



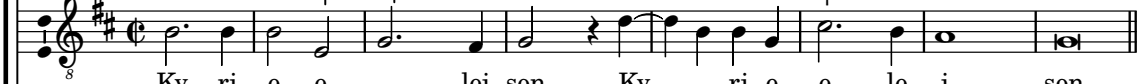
Ky - ri - e e - le - i - son.

Altus



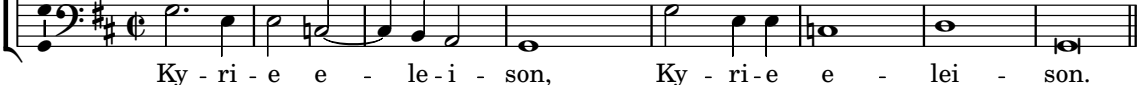
⁸ Ky - ri - e e - le - i - son, Ky - ri - e e - le - i - son.

Tenor

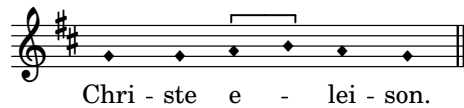


⁸ Ky - ri - e e - lei - son Ky - ri - e e - le - i - son.

Bassus



Ky - ri - e e - le - i - son, Ky - ri - e e - lei - son.



Chri - ste e - lei - son.

The image shows a single line of musical notation on a five-line staff. The key signature consists of two sharps (F# and C#), and the time signature is not explicitly shown. The melody is written in a treble clef and consists of six quarter notes: G4, A4, B4, C5, B4, and A4. A slur is placed over the last three notes (B4, C5, B4). The lyrics 'Chri - ste e - lei - son.' are written below the staff, with hyphens indicating syllable placement under the notes.

105

Ky - ri - e e - lei - son.

Ky - ri - e e - lei - son Ky - ri - e e - lei - son.

Ky - ri - e e - lei - son Ky - ri - e e - lei - son.

Ky - ri - e e - lei - son, e - lei - son.