

Do - mi - ne Je - su Chri - ste rex glo - ri - æ

Superius



Musical notation for Superius voice part, including lyrics: Li - be - ra a - ni - mas

Altus



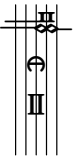
Musical notation for Altus voice part, including lyrics: Li - be - ra a - ni - mas o - - mmi -

Tenor



Musical notation for Tenor voice part, including lyrics: Li - be - ra a - ni -

Bassus



Musical notation for Bassus voice part, including lyrics: Li - be - ra a - ni - mas o - mmi -

7

o - mi - um fi - de - li - um de - fun - cto - - - - -

mas o - - - - - mni - um fi - de - - - - - li - um de - fun - cto - - - - -

um fi - de - li - um de - fun - cto - - - - - rum de - fun - cto - - - - -

15

rum de poe-nis in-fer - - ni, de poe-nis in-fer - - ni et de pro-

rum de poe-nis in-fer - - ni, de poe-nis in-fer - - ni et de pro-

rum de poe-nis in-fer - - ni, de poe-nis in-fer - - ni et de pro-

et de pro-fun-do la-cu: li-be-ra-ra-

fun-do et de pro-fun-do la-cu: li-be-ra-e-

fun-do la-cu: li-be-ra-e-

la-cu, et de pro-fun-do la-cu: li-be-ra-e-as de-o-re

28

e - as de o - re le - o - - -
 e - as de o - re, de o - re le - o - - -
 as de o - re le - o - nis de o - re le - o - nis de o - re le - o - nis de o - re

35

nis de o-re le-o nis ne ab-sor-be-at e - -
 nis de o-re le-o nis ne ab-sor-be-at e - -
 le-o - - nis ne ab-sor-be-at e-as_____

42

e - as tar - - ta - rus: ne ca - - dant_

- ta-rus, tar - ta - rus: ne ca - - dant in

- as tar - ta - rus: ne ca - - dant in ob-

tar - ta - rus: ne ca - - dant in ob -

50

The image shows a musical score for three voices (Soprano, Alto, and Bass) in G major. The score is written on three staves. The lyrics are in Latin and are: "in ob - scu - rum: sed si - gni - fer - sed si - gni - rum, in ob - scu - rum: sed si - gni -". The music features various rhythmic values including quarter, eighth, and sixteenth notes, as well as rests and ties. There are also some fermatas and slurs. The key signature has two sharps (F# and C#).

57

gni - fer San - ctus Mi - cha - el re -

gni - fer San - ctus Mi - cha - el re - pre - sen - tet e -

fer San - ctus Mi - cha - el re - pre - sen - tet e -

63

- pre-sen-tet e - - - - - as in lu-cem San - - - - - ctam in lu -
 - - - - - as in lu-cem San - - - - - ctam
 re-pre-sen-tet e - - - - - as in lu-cem San - - - - - ctam
 as in lu-cem San - - - - - ctam, in lu-cem San -

69

cem San - ctam: Quam o - lim A - bra -

in lu - cem San - ctam: Quam o - lim A - bra -

in lu - cem San - ctam: Quam o - lim, quam o - lim A -

84

ni e - ius, et se - mi-ni e - - - - - ius.

se - mi-ni e - ius et se-mi - ni e - - - - - ius.

ius et se - mi-ni e - ius, et se - mi - ni e - - - - - ius.

ius et se - mi-ni e - ius, et se - mi - ni e - - - - - ius.